

Getting More From Your Data



WORLD EDUCATION



NEW ENGLAND
Literacy Resource Center

Priyanka Sharma

May 30, 2019

How do you currently use Data?

~ What data do you collect? How and where?

~ How do you use the data that you have access to?



Share your responses in the Chat window

Data is Trending!

- ~ Increased focus on data and harnessing the power of data.
- ~ Increased emphasis on making data-informed decisions, program improvements.

Data is not a new concept.
What has changed?



Focus on Data

- ~ Beyond accountability, should be for opportunities for inquiry, learning, and program improvement
- ~ For discovery of gaps in services
- ~ Beyond testing, towards gathering qualitative data to capture more information

Data Discomfort?

- ~ Who owns our data?
- ~ How are they using it?



Increased need for Data Literacy

Data literacy -> Ability to derive meaningful information from data. It is critical to data exploration and discovery.

- ~ Focus on data quality
- ~ Privacy concerns
- ~ Data fluency



Putting your Data to Work

- ~ What questions do you need answered?
- ~ Are you collecting the right data for it? Is someone else collecting that data?
- ~ Who is collecting the data and who has access to this data?
- ~ How are you storing the data?



Using Data for Program Improvement

- ~ How is your program and services influencing student outcomes?
- ~ Who is participating in your programming? Who is being left out?

Data Sources - External and Internal

- ~ Labor market data
- ~ Community data
- ~ Local employers
- ~ Workforce Investment Board
- ~ Other?
- ~ Enrollment data
- ~ Attendance
- ~ Completion
- ~ Learning Gains
- ~ NRS data
- ~ Other?

Developing Data dashboards

The following data tools have dashboard capabilities.

~ Excel

~ Salesforce

~ Google Sheets



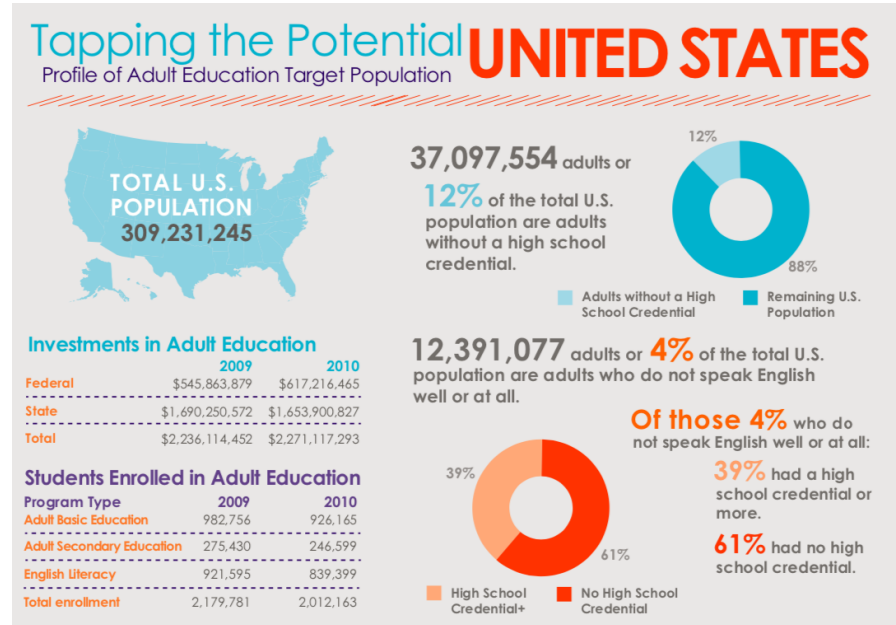
Using Data to tell a story

The following solutions offer helpful templates to design infographics and display data in a meaningful way.

~ Piktochart

~ Canva

~ Tableau



Putting it all together

- ~ *Data is a tool at your disposal*
- ~ *Know the limitations of data*
- ~ *Data can be biased*
- ~ *Programs need to employ a data-led approach to teaching and program improvement*

How would you use this data discussion in your program or classroom? What resources will you need?



Thanks!

Priyanka Sharma

priyanka_sharma@worlded.org

*Stay tuned for future
NELRC webinars!*

www.nelrc.org/PD

