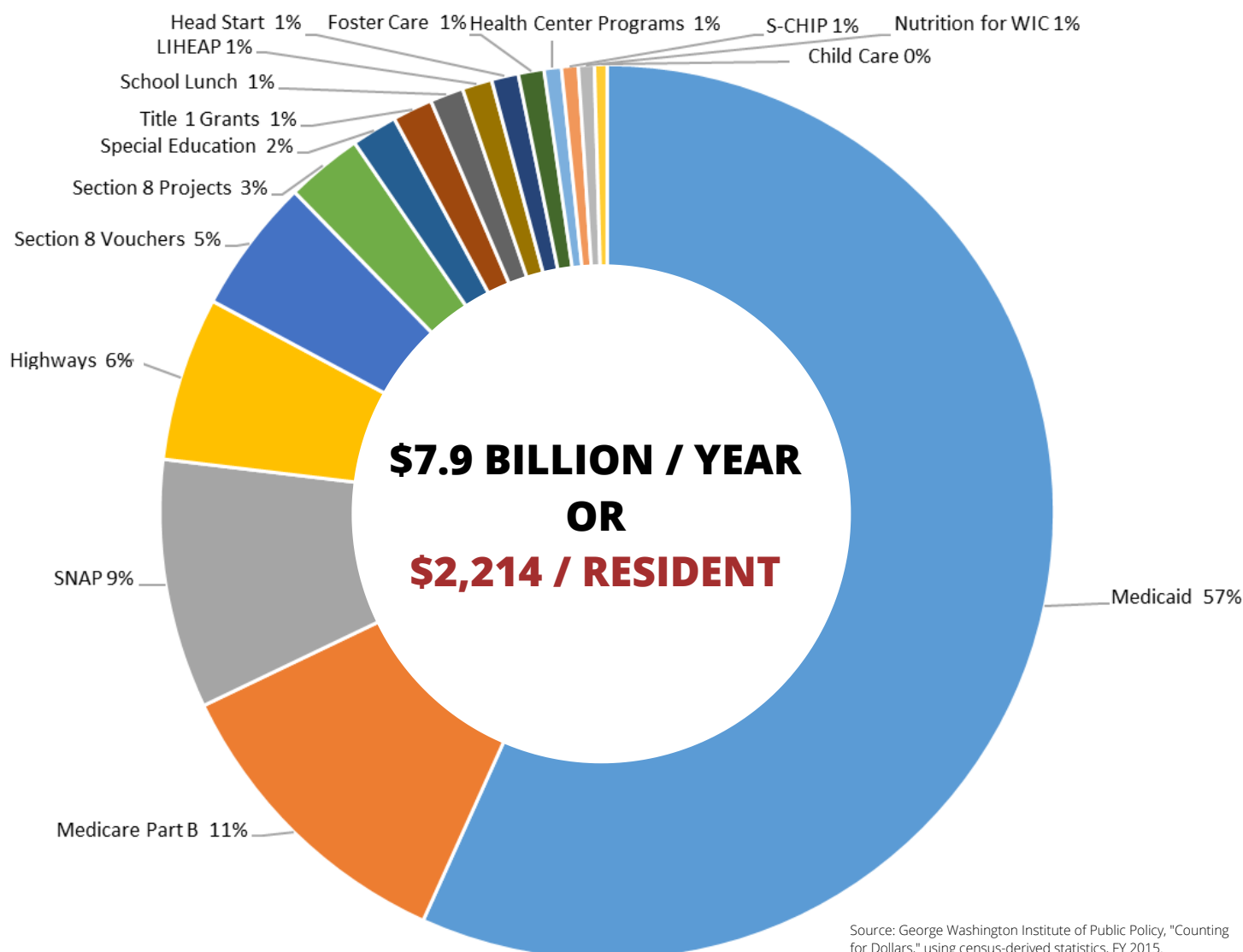


# Connecticut and the 2020 Census

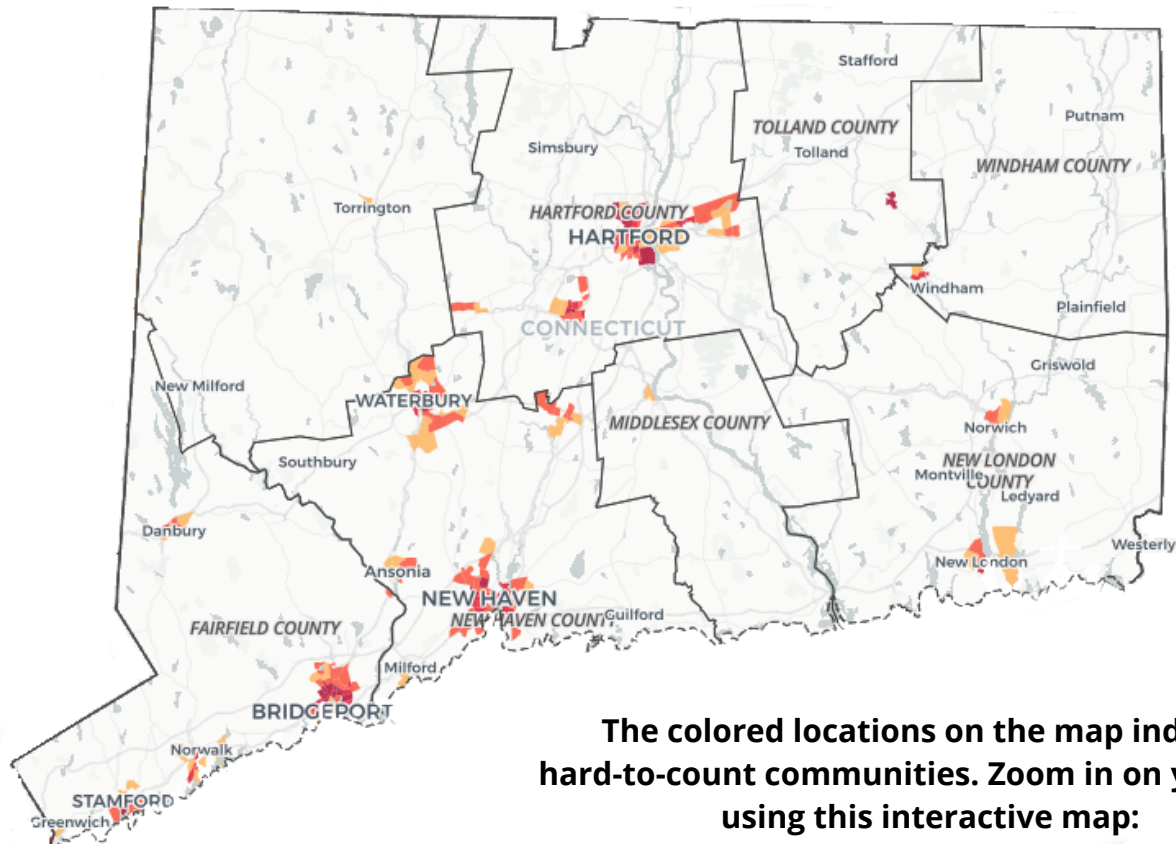


## How much will an undercount cost us?



**In Connecticut, these are the 16 programs that receive the most dollars from the federal government. Which communities would be most affected if these programs received less funding?**

# Where is your program on this map?



The colored locations on the map indicate hard-to-count communities. Zoom in on your area using this interactive map:  
<https://www.censushardtocompmaps2020.us>.

## Make sure your students and families are counted!

1. Join a "Complete Count Committee" to work with others in your community.
2. Make your program a go-to community resource for the census.
3. Encourage your students to apply for enumerator jobs.
4. Find resources for your program and classroom at: [nelrc.org/census](http://nelrc.org/census)

**Funding for education and many basic services depends on a complete count!**

Stand Up and Be Counted is a project of NELRC at World Education, Inc.